



Recreational Access to Pepco Transmission Corridor



## Transmission & Civil Engineering

Presented by: Underground Transmission  
July 5, 2016

# Agenda

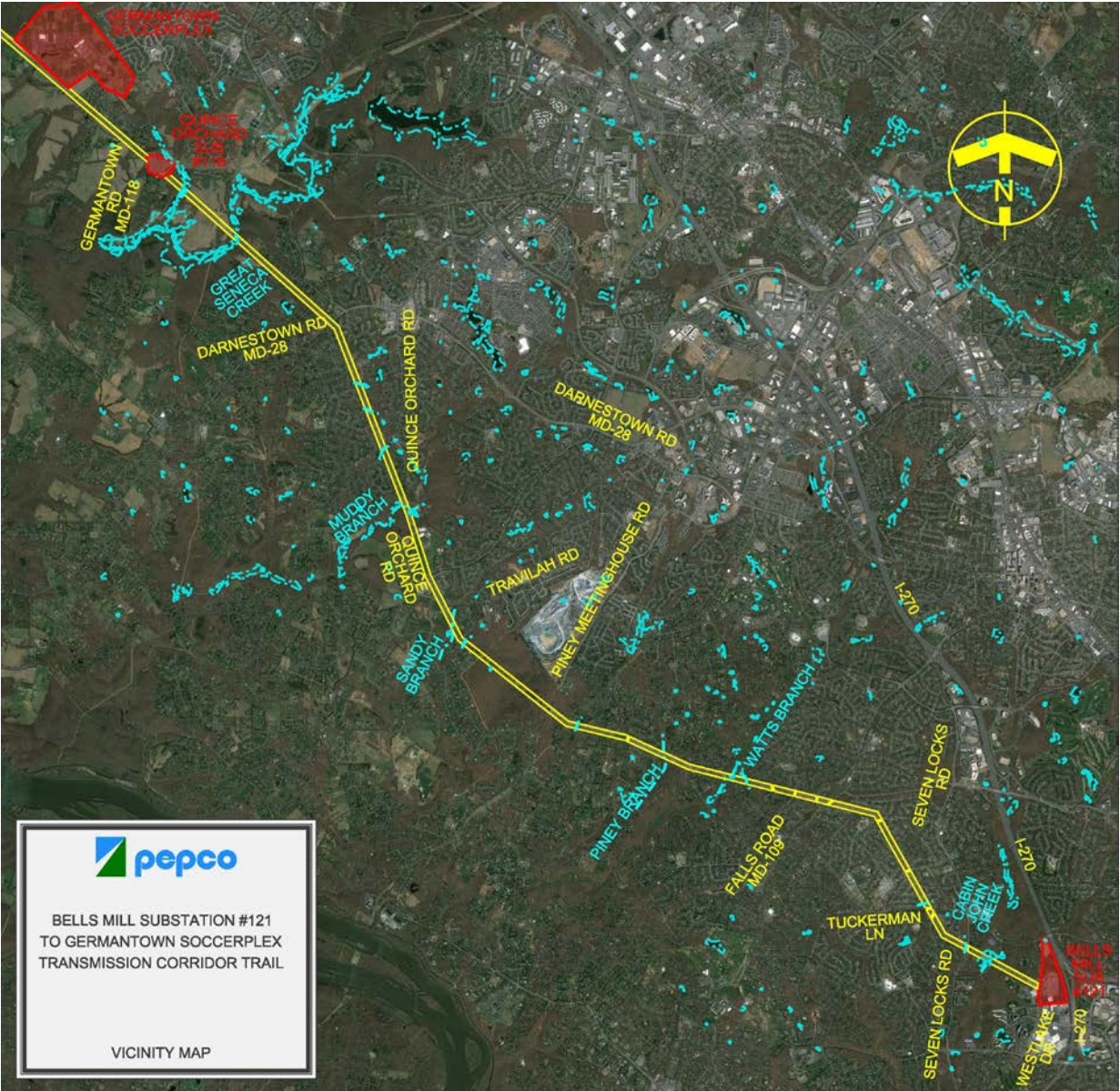
- Recap of the merger commitment
- Pepco's progress to date
- Committee introductions
- What is next?

# Summary: Merger Commitments

- First pilot project: A combined paved and natural surface trail system along transmission corridor from Westlake Dr. to Germantown SoccerPlex
- Natural trail in the portion between Quince Orchard Road and Germantown SoccerPlex – initial trail portion to address
- It is not specified whether the trail needs to be continuous along the transmission corridor, but our intent is to try to make it a continuous trail
- Pepco shall work with the Counties, M-NCPPC, and DNR to gain approval of these trails
- Trails to be constructed in a way that reasonably minimizes the portion deemed to be impervious surfaces in order to reduce the storm water retention requirements
- Define and resolve Licensing Agreement to support a trail on Transmission Corridor
- Address trail funding and cost; and cost recovery

As there are a number of interested commitment stakeholders, any potential competing interests regarding trail design and/or use must align to ensure a successful outcome.

# Vicinity Map



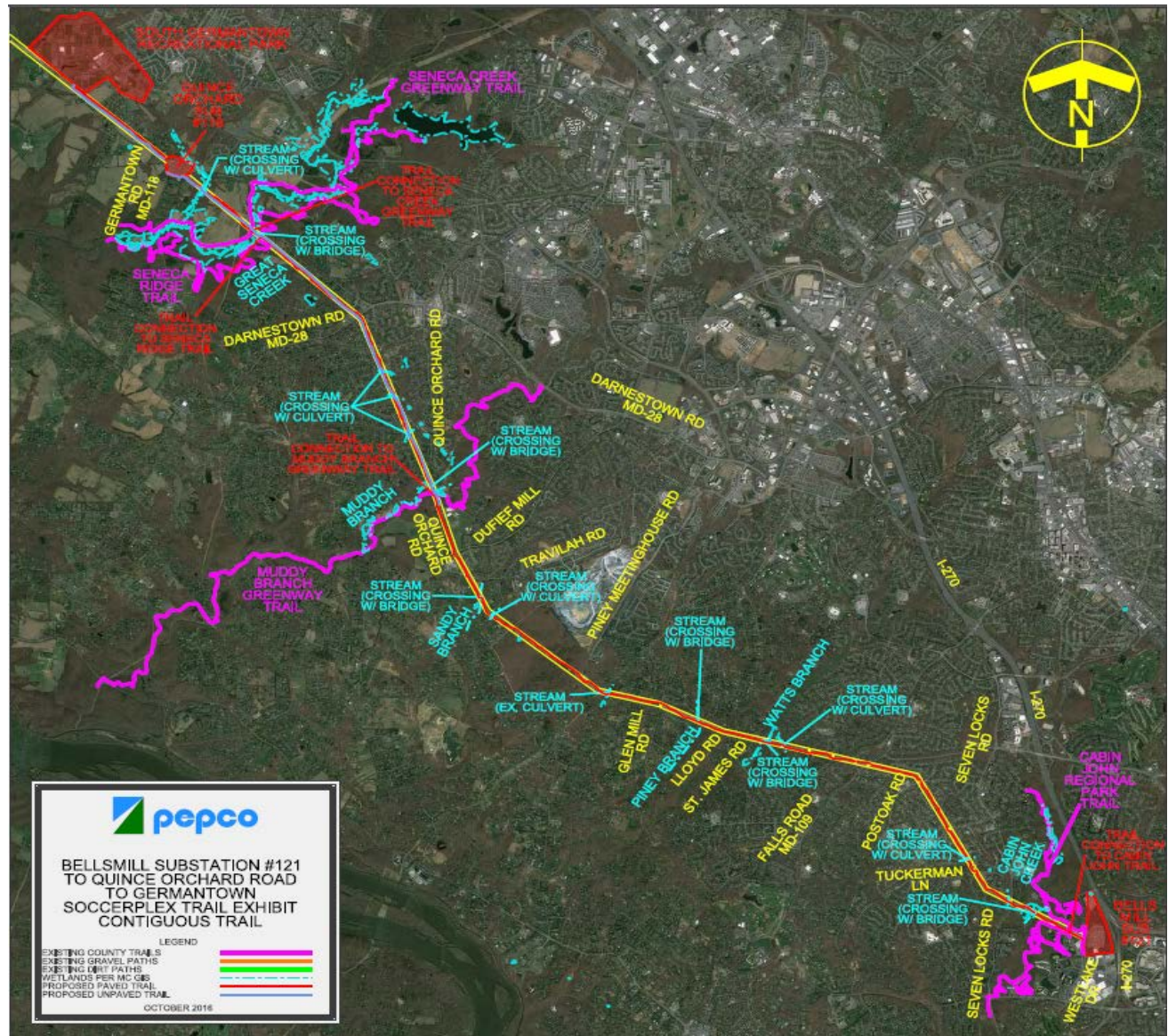


BELLS MILL SUBSTATION #121  
TO GERMANTOWN SOCCERPLEX  
TRANSMISSION CORRIDOR TRAIL

VICINITY MAP

# Aerial view of proposed trail - Contiguous

**Trail Length:**  
Natural: 5.3 Miles  
Paved: 12.9 Miles



# Pepco's Progress To Date

- July 5 meeting held to review merger commitment, present trail concepts, clarify requirements and discuss next steps
- Development of a Governance Structure and Functional Working Teams and identification of team personnel
  - Executive Committee
  - Steering Committee
  - Funding Committee
  - Design Standards – Sustainable Natural Trail
  - Design Standards – Paved Trail
  - Licensing Committee
  - Permits Committee
- Held inaugural Executive Committee and Steering committee meetings on August 26 and September 14, respectively
  - Validated project objectives and desired outcome
  - Guide overall development and implementation of the project
  - Identify and broadly manage requirements necessary to complete project
  - Identify and Engage functional SMEs / Work Groups

# Pepco's Progress To Date – Continued

- Provide oversight of the Work Groups
  - Work Product
  - Timeline
  - Estimated Cost
- Notified identified participants of their involvement and the next steps on September 27
- Recurring Steering Committee meetings set for the 4<sup>th</sup> Wednesday of each month
- Moving forward, it is anticipated that coordinated design activities will commence mid-to-late October 2016, leveraging the concept design work originally presented on July 5.

# Governance Structure

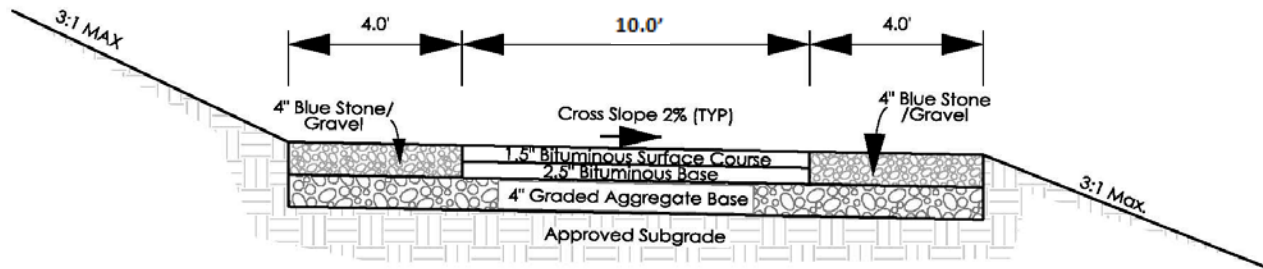
- **Executive Committee** - Broad oversight of the effort
- **Steering Committee** - Guide the development and implementation of the effort by providing coordination and oversight of all work groups
- **Funding Committee** - To explore opportunities and seek funding and/or in-kind contributions as may be necessary or appropriate
- **Design Standards: Sustainable Natural Trail** – Develop standards for use in the design of the natural trail
- **Design Standards: Paved Trail** – To develop standards for use in the design of the paved trail
- **Licensing Committee** – To develop and enforce agreements between all involved groups
- **Permits Committee** – To ensure that all applicable permits are filed for and received in a timely manner

\*Working Group Chair / Single Point of Contact

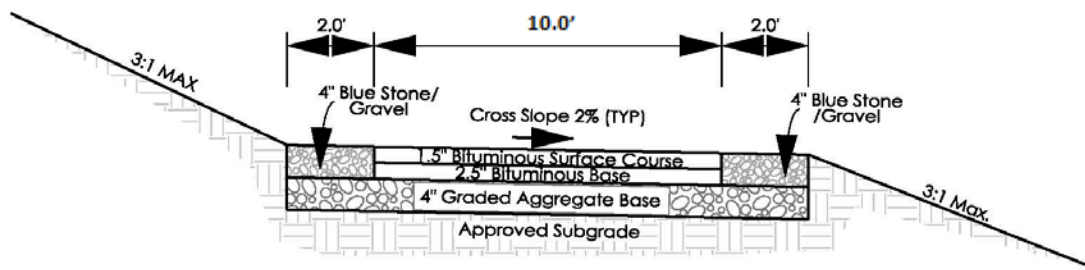
# Design Considerations

- Width, Slope, Material, Etc.
- Grading and sediment control
  - Keep sediment from leaving work site
- Stormwater management
  - Grass swales
  - Micro-bioretenion
- Stormwater management design constraints
  - Runoff treatment
  - Porous vs. Impervious
- Permitting requirements and ways to reduce the number of permits needed
- Scheduling – From notice to proceed to job close

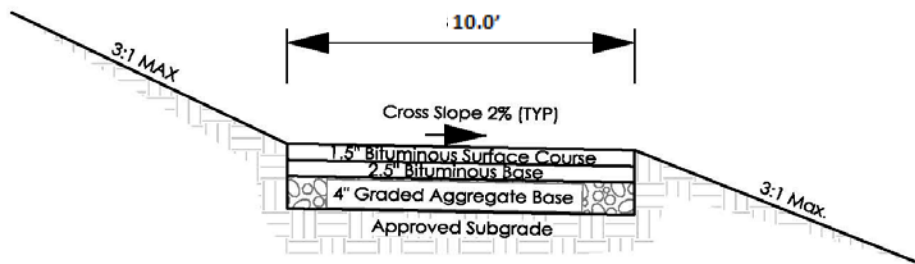
# Summary of Options 1, 2, 3 (4" Graded Aggregate Base, 2.5" Bituminous Base, 1.5" Bituminous Surface Course)



Trail Option #1  
Not to Scale



Trail Option #2  
Not to Scale



Trail Option #3  
Not to Scale

## Next Steps

- Coordinate design activities to commence mid to late October 2016
  - We expect to lock in the horizontal alignment and have an approved stormwater management and sediment & erosion control concept plan by March 2017
- Define design requirements / needs (Design Standards Committees)
- Address and finalize licensing requirements (Licensing Committee)
- Identify potential trail design alternatives (Design Standards Committees)
- Assess / evaluate potential trail design alternatives including cost, schedule, adherence to licensing requirements (Design Standards and Licensing Committees)
- Select recommendation
- Garner consensus approval
- Advance recommendation to final design

## Appendix: Typical Pipe Culvert Crossing



## Appendix: Typical Bridge Crossing



